

# CREATE! **alicon**



**alicon** Series  
**Breakers**

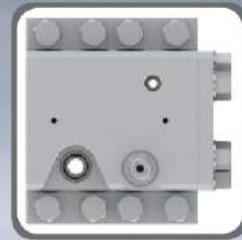


**DAEMO**

DAEMO ENGINEERING CO., LTD.

## Valve Case with TPC (Total Power Control) System

- Well-balanced Valve Case.
  - Shortened height & length, and wider width for stability.
- Durable Valve Plate.
  - Increased durability by using 6 bolts instead of 4 bolts.
- 2 Stroke Selector.
  - Flexible stroke according to your working condition.
  - Long stroke (Primary breaking) / Short stroke (Secondary breaking).
  - B50~B180: located on Cylinder, B210~B1000: located on Valve Case.
- Options for your better choice.
  - BPM Adjuster, Relief Valve (B210~B450).
  - 2 Stroke Remote Control (B210 ~ B450, and B1000).



alicon



## Seal System

- For longer life.
  - Using 100% NOK seals on the alicon series.
- Increased Durability.
  - Additional square buffer seal for B210 and upper models.
- Minimize piston's shaking action.



## ABF (Anti Blank Firing) System

- Protect your breaker.
  - Chisel pins, T/Bolts, and F/Head can be protected from damage.
- Automatical operation.
  - ABF ON: Automatically STOP when blank firing.
- No additional cost.
  - Provide as a standard from B50 to B1000.

## alicon Bracket Type



**Top Box Type  
(Low noise)**



**Top Box Type  
(Standard)**



**Top Split Type**



**Side Type**



**Skid Loader Type**



**Backhoe Type**

## alicon Series Breaker Specification

Description		Unit	B06	B10	B20	B30	B40	B50	B60	B70	B90	B140	B145	B180
Suitable Excavator		ton	0.5~1.2	0.5~1.5	1~2.5	2~4	3~4.5	3~8	4~8	5~8	6~9	10~15	10~15	16~20
Top Box Type	Operating Weight	kg	65	115	150	180	224	333	375	431	614	929	959	1,209
	Overall Length	mm	932	1,110	1,239	1,334	1,408	1,603	1,635	1,805	1,981	2,225	2,263	2,455
Side Type	Operating Weight	kg	-	80	100	130	162	271	291	340	513	773	803	1,199
	Overall Length	mm	-	964	1,080	1,145	1,192	1,560	1,620	1,657	1,842	1,903	1,941	2,094
Chisel Out Diameter		mm	40	40	45	53	62	70	75	78	85	105	105	120
Working Length of Chisel (Top Box Type)		mm	233.0	233.0	287.0	321.0	348.5	412.5	465.0	445.0	464.5	537.5	527.5	668.5
Working Pressure		kgf/cm <sup>2</sup>	70~120	70~110	80~120	80~120	100~140	100~140	100~140	100~140	100~140	120~160	120~160	120~170
Oil Flow		LPM	10~22	15~30	20~40	25~45	30~50	30~55	35~70	45~80	50~100	90~110	90~110	100~140
Blow Rate	Standard Speed	BPM	600~1,200	600~1,200	600~1,200	600~1,100	500~1,000	350~900	350~800	350~900	300~700	350~550	350~550	350~550
	High Speed	BPM	-	-	-	-	-	450~1,000	450~1,100	450~1,000	550~950	500~750	500~750	500~850
Max. hydraulic input power		kW	4.3	5.4	7.8	8.8	11.4	12.6	16.0	18.3	22.9	28.8	28.8	38.9
Back Head N2 Gas Pressure		kgf/cm <sup>2</sup>	9~12	9~12	9~12	9~12	9~12	9~12	9~12	9~12	9~12	9~12	13~16	9~12
Description		Unit	B210	B215	B230	B235	B250	B300	B360	B450	B650	B850	B1000	
Suitable Excavator		ton	18~25	18~25	18~25	18~25	22~29	26~32	30~38	40~50	42~81	55~100	70~120	
Top Box Type	Operating Weight	kg	1,738	1,817	1,777	1,856	2,165	2,832	2,937	3,713	4,380	5,850	8,060	
	Overall Length	mm	2,764	2,881	2,764	2,881	2,898	3,200	3,200	3,595	3,766	4,140	4,875	
Side Type	Operating Weight	kg	1,647	1,726	1,663	1,742	2,020	2,796	2,806	3,628	-	-	-	
	Overall Length	mm	2,348	2,348	2,348	2,348	2,457	2,732	2,732	3,070	-	-	-	
Chisel Out Diameter		mm	135	135	140	140	145	150	155	165	180	200	220	
Working Length of Chisel (Top Box Type)		mm	656.0	706.0	666.0	706.0	702.0	787.0	767.0	955.5	807.0	912.0	1,010.5	
Working Pressure		kgf/cm <sup>2</sup>	130~170	130~170	130~180	130~180	140~180	140~180	140~180	140~180	150~190	150~190	175~200	
Oil Flow		LPM	110~160	110~160	130~170	130~170	150~200	180~240	180~240	200~280	280~340	320~420	360~450	
Blow Rate	Standard Speed	BPM	350~500	350~500	250~400	250~400	250~400	200~350	200~350	200~300	250~420	175~320	300~475	
	High Speed	BPM	450~600	450~600	350~500	350~500	350~500	300~480	300~480	300~450	300~500	210~400	-	
Max. hydraulic input power		kW	44.4	44.4	50.0	50.0	61.8	73.5	73.5	82.4	124.2	139.7	148.7	
Back Head N2 Gas Pressure		kgf/cm <sup>2</sup>	8~11	11~14	8~11	11~14	8~11	8~11	8~11	11~13	13~16	13~16	8~11	

\* The specifications above are subject to change without prior notice for quality improvement.

# Attachments for Every Requirement



## Series Breakers - Application

Description	B06	B10	B20	B30	B40	B50	B60	B70	B90	B140	B145	B180	B210	B215	B230	B235	B250	B300	B360	B450	B650	B850	B1000	
Under water works	-	-	-	-	○	○	-	○	○	○	○	○	○	○	○	○	○	○	○	○	○	○	○	○
Auto greasing system hole	-	-	-	-	-	-	●	●	●	●	●	●	●	●	●	●	●	●	●	●	●	●	●	●
TPC (Total Power Control) System Selector Type	-	-	-	-	-	●	●	●	●	●	●	●	●	●	●	●	●	●	●	●	●	●	●	●
ABF (Anti Blank Firing) System	-	-	-	-	-	●	●	●	●	●	●	●	●	●	●	●	●	●	●	●	●	●	●	●
Auto Greasing Unit	-	-	-	-	-	-	○	○	○	○	○	○	○	○	○	○	○	○	○	○	○	○	○	○
Central Grease Supply Unit	-	-	-	-	-	-	○	○	○	○	○	○	○	○	○	○	○	○	○	○	○	○	○	○
BPM Adjuster	-	-	-	-	-	-	-	-	-	●	●	●	●	●	●	●	●	●	●	●	●	●	●	-
Internal Relief Valve	-	-	-	-	-	-	-	-	-	-	-	-	○	○	○	○	○	○	○	○	○	-	-	-
TPC (Total Power Control) System Remote Control Type	-	-	-	-	-	-	-	-	-	-	-	-	○	○	○	○	○	○	○	○	○	-	○	-
Low Noise Housing Bracket	○	○	○	○	○	○	○	○	○	○	○	○	○	○	○	○	○	○	○	○	○	○	○	●
Dust Protector	-	-	-	-	-	-	-	-	-	○	○	○	○	○	○	○	○	○	○	○	○	○	○	○

● Standard ○ Option



## Shape of chisel

Classification	Major Contents		
Moil			Concrete, Rocks, Pavements, Slopes
Wedge			Trench, Slopes, Finishing
Blunt			Quarries (for secondary breaking)
Conical			Concrete, Rocks, Pavements



## Choosing the chisel for different rock types

Classification	Rock	Recommended Breakers	Recommended Chisels
Hard rock	Basanite, Granite, Diabase	B140~B1000	Blunt type, Wedge type
Soft rock	Sandstone, Limestone, Coal	B06~B1000	Moil type, Wedge type, Conical type



## Control valve type

Classification	Models
Internal built-in control valve	B06, B10, B20, B30, B40, B60, B1000
Outer Control valve installed without Accumulator	B50, B70, B90, B140, B145, B180, B210, B215
Outer Control valve installed with Accumulator	B230, B235, B250, B300, B360, B450, B650, B850



Engineered for Excellence

# Responsible Promise

Advanced Value

Powerful Performance

Challenging Effort

## Features of alicon Series

alicon series became **Lighter, Stronger, and more Powerful** than ever.

Enlarged the diameter of T/Bolt improved its **durability**.

Changed the hose connecting port from Split Flange structure In/Out port to **New Adaptor type port**. (Prevent bolt breakage and oil leakage : B06 ~ B1000)

Switched Box Housing to **Bending design** for more durability.

Diversified **23 products lines** to fit to any work conditions.

**Redesigned chisel pin** has improved durability.

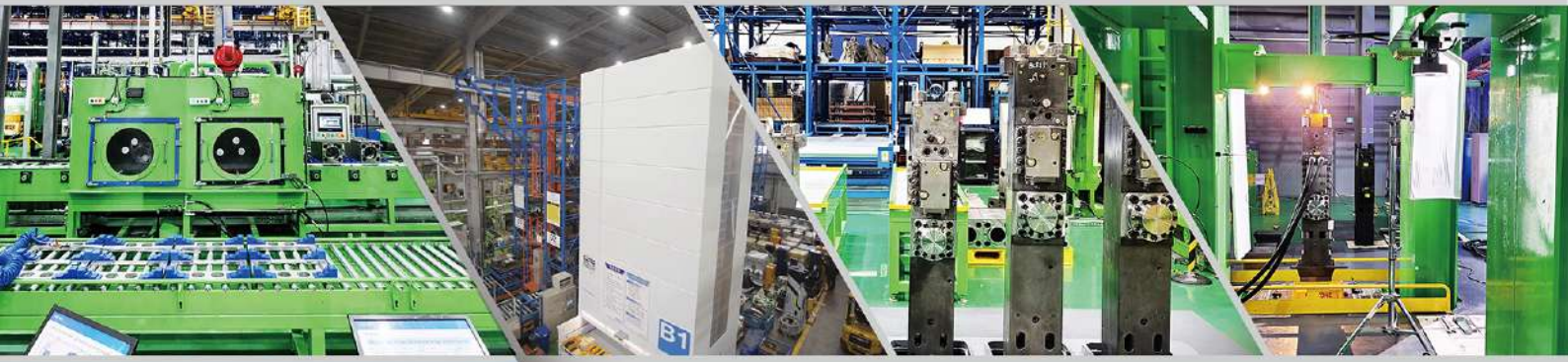
Enlarged chisel's diameter improved more **powerful impact**.

**Anti Blank Firing system** increased the life of breaker (Chisel Pins, T/Bolts, F/Head, etc).

More options: Anti Blank Firing On/Off Valve, TPC system (2 stage stroke valve), Internal Relief Valve, BPM adjust Valve, Provision Hole for underwater works and Auto Grease System.



# Quality Management System



DAEMO ENGINEERING CO., LTD.



## DAEMO ENGINEERING CO., LTD. (HEAD QUARTER)

ADDRESS : 56, Emtibeui 26-ro 58beon-gil, Siheung-si, Gyeonggi-do, 15118 Republic of Korea  
TEL : +82-31-488-6107 FAX : +82-31-496-0066  
Home page : <http://www.daemo.co.kr>  
E-mail : [david@daemo.co.kr](mailto:david@daemo.co.kr) (Mr. David Jung)  
[bryon@daemo.co.kr](mailto:bryon@daemo.co.kr) (Mr. Bryon Kim)

## DAEMO EUROPE N.V.

ADDRESS : MOESTOEMAATHEIDE 15, B-2440 GEEL, BELGIUM  
TEL : +32 (0) 14-59-2363 FAX : +32 (0) 14-59-0316  
Mobile : +32-472-220-496  
E-mail : [smilk@daemo.co.kr](mailto:smilk@daemo.co.kr) (Mr. Bread Joon)  
[erik.zels@daemo.co.kr](mailto:erik.zels@daemo.co.kr) (Mr. Erik Zels)

## DAEMO AMERICA INC.

ADDRESS : 6675 DOOLITTLE AVE BLDG A, RIVERSIDE, CA 92503, USA  
TEL : +1-951-688-8300 FAX : +1-951-688-8500  
Mobile : +1-951-255-6600 / +1-951-966-3374  
E-mail : [eunsoo@daemo.co.kr](mailto:eunsoo@daemo.co.kr) (Mr. Eunsoo Lee)  
[bruce@daemo.co.kr](mailto:bruce@daemo.co.kr) (Mr. Bruce Jeong)

## CHANGZHOU DAEMO MACHINERY CO., LTD.

ADDRESS : NO 269, HUANGHEXI RD, XUEJIA INDUSTRIAL COMPLEX, CHANGZHOU-CITY, JIANGSU PROVINCE, CHINA  
TEL : +86-519-8595-9000 FAX : +86-519-8595-9009  
Mobile : +86-1880-150-2699  
E-mail : [yesbj@daemo.co.kr](mailto:yesbj@daemo.co.kr) (Mr. BJ Kim)

## DAEMO ENGINEERING INDIA PRIVATE LTD.

ADDRESS : Plot No. 165/1/21, T block, Priyadarshini Mahila Swayam  
Rojgar Industrial Premises, MIDC Chowk, Bhosari -411026, Pune, Maharashtra, India  
TEL : +91-84849-07955  
Mobile : +91-91739-87955 / +91-90294-57955  
E-mail : [cgkj6388@daemo.co.kr](mailto:cgkj6388@daemo.co.kr) (Mr. Charles Ki)  
[wasim@daemo.co.kr](mailto:wasim@daemo.co.kr) (Mr. Wasim Shaikh)

[www.daemo.co.kr](http://www.daemo.co.kr)

PLEASE CONTACT